



Driver Installation Guide

DUALi Inc.

Last Revised Date: 15th June. 2012

Copyright © 2012 DUALi Inc. All rights reserved. You are strictly prohibited to copy, disclose, distribute, or use this document in part or as a whole for any purposes other than those for which this document is disclosed. This document is copyrighted and contains confidential information and other intellectual property rights of DUALi Inc. Any unauthorized use, copy, disclosure or distribution constitutes infringement of DUALi's intellectual property rights.

DUALi Inc. reserves the right to make changes to its applications or services or to discontinue any application or service at any time without notice. DUALi provides customer assistance in various technical areas, but does not have full access to data concerning the use and applications of customer's products.

Therefore, DUALi assumes no liability and is not responsible for customer applications or software design or performance relating to systems or applications incorporating DUALi products. In addition, DUALi assumes no liability and is not responsible for infringement of patents and/or any other intellectual or industrial property rights of third parties, which may result from assistance provided by DUALi.

Composition of the information in this manual has been done to the best of our knowledge. DUALi does not guarantee the correctness and completeness of the details given in this manual and may not be held liable for damages ensuing from incorrect or incomplete information. Since, despite all our efforts, errors may not be completely avoided, we are always grateful for your useful tips.

We have our development center in South Korea to provide technical support. For any technical assistance can contact our technical support team as below;

Tel: +82 31 213 0074

e-mail : duali@duali.com

CONTENTS

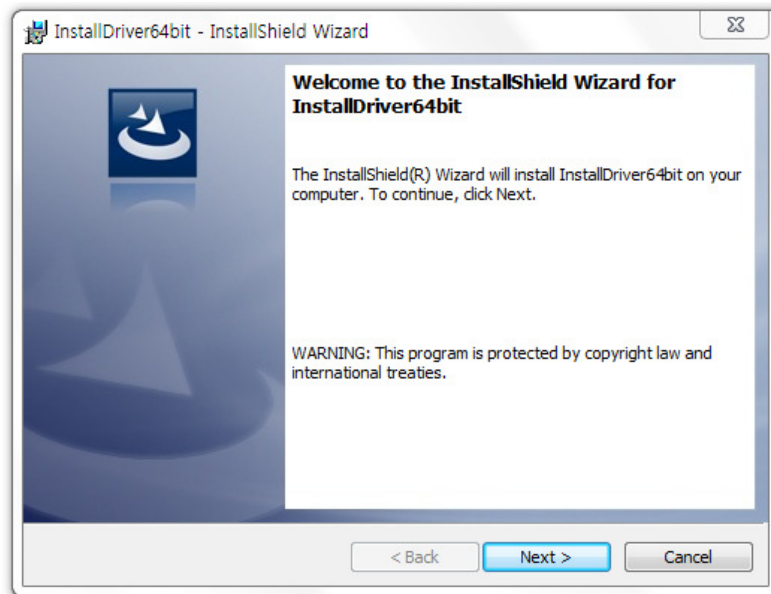
1. SUMMARY	2
2. INSTALL DRIVER	3

1. SUMMARY

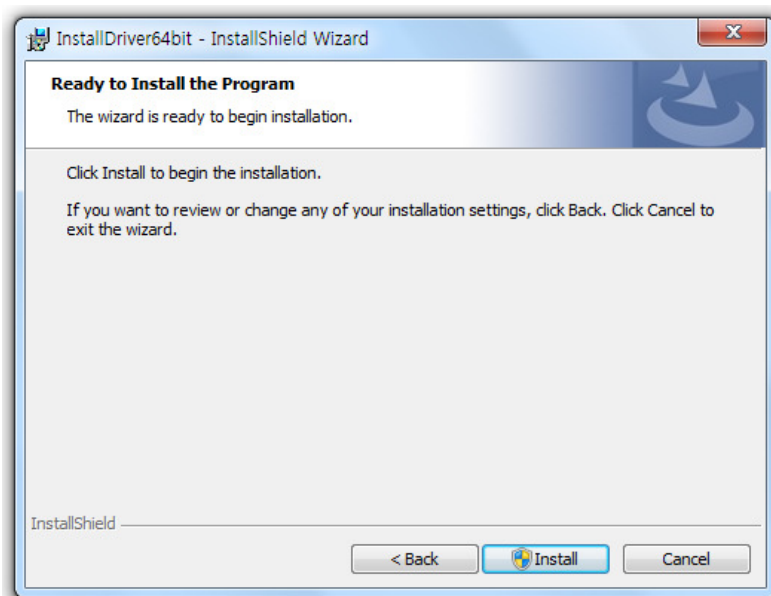
- This document explains how to install driver for following products of DUALi:
 - **Reader/Writer: DE-620/620R/620L, DE-600F**
 - **Modules : DE-ABM4, DE-ABM5, DE-ABCM, DE-ABCM6, DE-ABCM2, DE-AFCMI**
- Install Program
 - Install Program : '**InstallDriver32bit.msi**' or '**InstallDriver64bit.msi**'
 - Please check your Windows OS (32bit or 64bit) and execute the right one.
- Support OS
 - **Windows 2000, Windows XP, Window Vista and Windows 7.**

2. INSTALL DRIVER

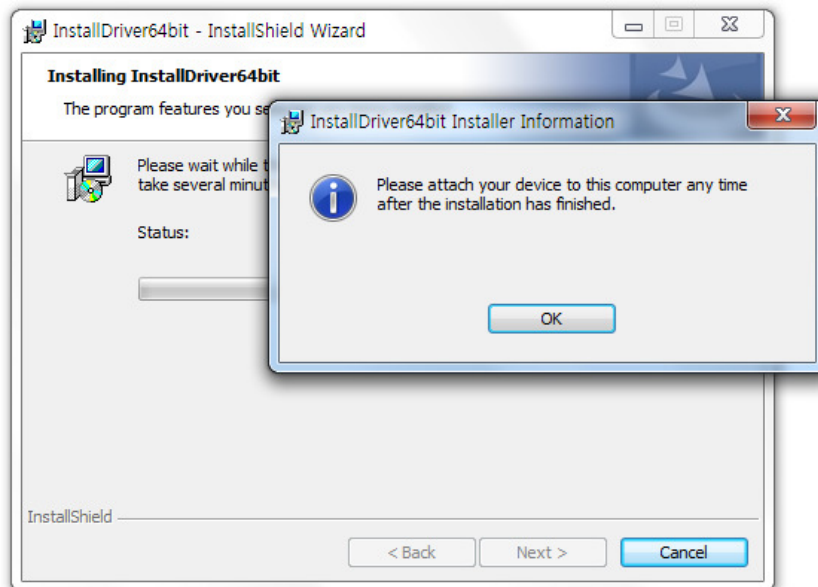
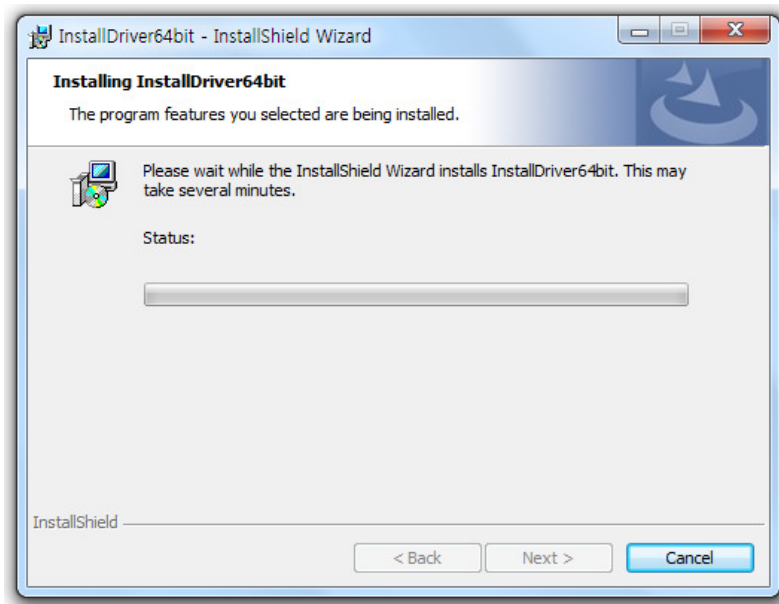
- **Do not connect the Duali device while you're installing the driver.**
- Run 'InstallDriver32bit.msi' or 'InstallDriver64bit.msi' inside Install Driver folder of provided SDK CD.
- Install driver according to following procedures.



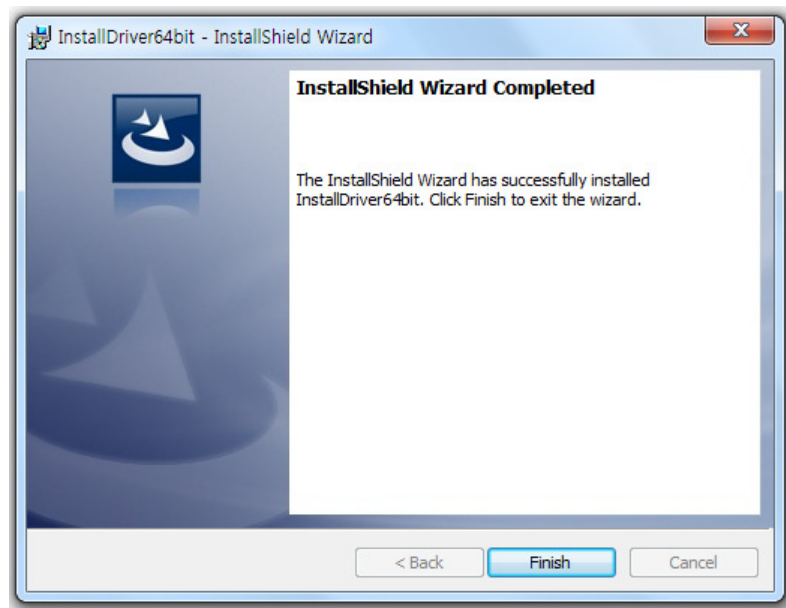
- a. Click 'Next'.



- b. Click 'Install'.



c. Click 'OK'.



- d. Once you complete this process, you will see this message.
 - e. Click 'Finish' to complete driver installation.
-
- **Once you finish the driver installation, please connect the device**